

AWESOME POWER.

GREAT COMFORT.

SUPERB STYLE.

AMAZING MILEAGE.

IT FEELS GOOD TO NOT JUST  
GET MILEAGE BUT POWER, COMFORT  
AND PREMIUM STYLE AS WELL.



सच कर देंगे सपने

CB *Shine*  
Winner's choice



\*CB Shine is a revolutionary machine that lets you get more, enjoy more. Which is why, millions of Indians trust nothing else but Honda CB Shine.



## STYLE



### 3D Emblem

3D Emblem gives a distinct class to the bike. It adds premiumness and style to the bike.



### Stylish Graphics

New Graphics are the styling signature of CB Shine. Colour and design of graphics are upto the mature image of the Indian customer.

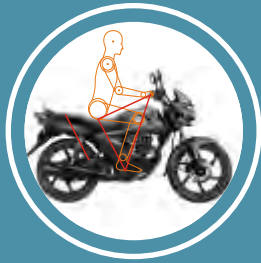
## DURABILITY & EASY MAINTENANCE



### Tubeless tyres

New CB Shine has Tubeless tyres which means less probability of flat tyres on the go. Also available in Tuff-up Tube (Spoke Wheels).

## COMFORT & CONVENIENCE



### STRIKING ERGO-TEC DESIGN

CB Shine comes with Ergo-tec design providing easy handling and superior riding comfort based on human engineering.

The light weight, advanced design diamond frame distributes load evenly to provide stability; while the 3-step spring-loaded hydraulic shockers give it superior shock absorption capability.



### Grab rail

CB Shine incorporates body coloured grab rail which is distinct in its class.



### Handle Bar weight & Mirror design

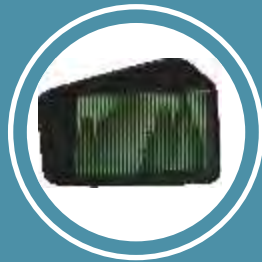
CB Shine has handle bar weight which dampens vibrations and improves stability of the bike.

New age mirror design is mark of excellence in itself.



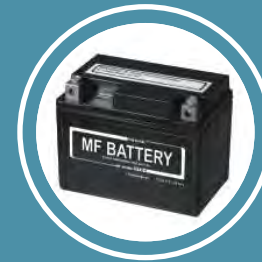
### Strong and flexible frame

CB Shine has strong light weight diamond frame. It has strong yet flexible frame which has proven itself on Indian road conditions.



### Viscous air filter

Conventional air filter requires cleaning every 4,000Kms & replacement every 12,000Kms but viscous air filter requires no maintenance and replacement even after 15,000Km. It is maintenance free and economical.



### MF Battery

Maintenance Free Battery, a newly adopted technology, is maintenance free & leak proof. Battery life of MF battery is more than the conventional battery.

## PERFORMANCE



### Optimax Engine

CB Shine engine has been specially developed for Indian conditions. Termed as "OPTIMAX" which means 'Optimum Input for Maximum Output', this engine optimizes the fuel input to maximize output. It delivers best balance of mileage and pickup.



### Disc Brake (Optional)

CB Shine has Front disc which offers superb stopping in all conditions.

**CB Shine**  
Winner's choice



BLACK



MONSOON GREY METALLIC



GENY GREY METALLIC



REBEL RED METALLIC



FORCE SILVER METALLIC

## TECHNICAL SPECIFICATIONS<sup>+</sup>

ENGINE	
Type	Air Cooled, 4 Stroke, SI Engine
Displacement	124.7 cc
Bore x Stroke	52.4 mm X 57.86 mm
Compression Ratio	9.2:1
Net Power	7.55 Kw (10.12 bhp) @ 7500 rpm
Torque	10.54 Nm @5500 rpm
Valve System	OHC
Fuel System	Carburettor
Starting System	Kick Start & Electric Start
Lubrication	Forced Pressure & Wet Pump
Air Filter	Viscous Paper Filter
DRIVE TRAIN	
Transmission	4 Speed Gear
Final Transmission	Chain Drive
Gear Shift Pattern	All Back (N-1-2-3-4)
Clutch Type	Manual Clutch Wet Multiplate Type
DIMENSION	
Kerb weight	120 Kg
Length	2014 mm
Width	762 mm
Height	1071 mm
Wheel Base	1266 mm
Ground Clearance	157 mm
Fuel Tank Capacity	10.5 litres
CHASSIS	
Frame type	Advanced Design Diamond Frame
Suspension: Front	Spring Loaded Hydraulic Type
Rear	Spring Loaded Hydraulic Type
Tyre: Front	Tubeless Tyres 80/100 -18 47P
Rear	Tubeless Tyres 80/100 -18 54P
Brake: Front	Disc 240 mm dia
Rear	Drum Brakes - 130mm
ELECTRICAL & OTHER	
Ignition	Digital CDI (Multi Mapping)
Battery	12V- 2.5 Ah
Head Lamp	12V 35/35W

1. <sup>+</sup>The technical specifications and designs of bike shown here may vary according to the requirements and are subject to change without any notice. 2. CB Shine meets Bharat Stage III Norms. 3. <sup>^</sup>Achieved under Honda test conditions. 4. Accessories shown in the picture may not be a part of the standard equipment. 5. Actual color of the bike may vary from the ones shown here. 6. \*HMSI sales figures. 7. \*\*Conditions apply.

